

SSC1 Sport Yellow Standard LED Pod

DIODE DYNAMICS

PERFORMANCE LIGHTING TECHNOLOGY



FEATURES

STAGE
SERIES



- Compact single-LED form factor
- High intensity LED chip
- Backlighting available amber
- Durable powdercoated aluminum construction
- Integrated Deutsch-style connector
- Designed, torture tested and assembled in USA

GENERAL SPECIFICATIONS

Optic	Peak Beam Intensity (Candela)	Illuminance (lux @10m)	Measured Output (Lumens)	Raw Output (Lumens)	Output Color
Wide	2,400 cd	24 lux	1,000 lm	1,305 lm	Selective Yellow
Flood	380 cd	4 lux	1,000 lm	1,305 lm	Selective Yellow
Spot	43,200 cd	432 lux	1,000 lm	1,305 lm	Selective Yellow

Functions: Yellow Output with Amber Backlight

Voltage Range: 9-16V

Current Draw (amps @ 12.8V): 1.1A (output), 25mA (backlight)

Wattage: 14W (output), 0.3W (backlight)

Connector Type: 4 Pin DT Connector

Driver Type: Integrated Driver

LED Type/Count: Cree XPL 4000K/1 total, 3014/3 total

Compliance Rating: J575 Durability Test

Intrusion Rating: IP67 Weatherproof

Operating Temperature: -40°C to 85°C

What's Included:

- One (1) or Two (2) SSC1 Standard LED Pods
- One (1) or Two (2) Deutsch-style wire pigtails
- One (1) or Two (2) Mounting brackets and hardware

Dimensions & Weight:

Length: 7.5" **Width:** 4.5" **Height:** 3"

Weight: 0.7 lbs (single), 1.2 lbs (pair)

SKUs: Append "S" to the end of each SKU for single and "P" for pair

DD6443 SSC1 Sport Yellow Wide Standard ABL

DD6448 SSC1 Sport Yellow Flood Standard ABL

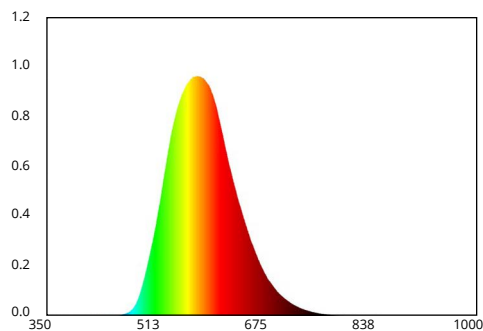
DD6453 SSC1 Sport Yellow Spot Standard ABL

All data and specifications are nominal values and may vary.

PUBLISHED: 1-10-2022

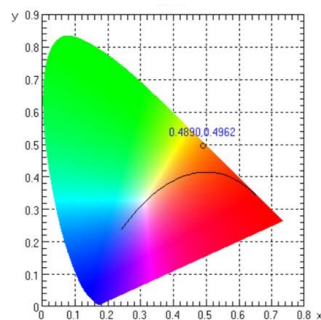
COLORIMETRIC SPECIFICATIONS

YELLOW MAIN BEAM



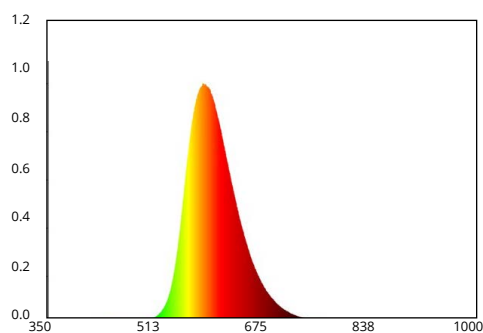
Spectral Distribution

CHROMATICITY



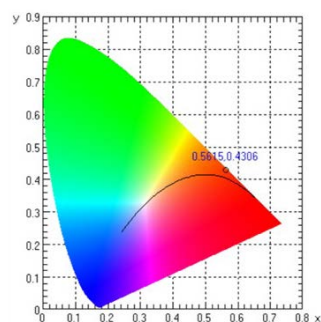
X=0.4890, Y=0.4962

AMBER BACKLIGHT



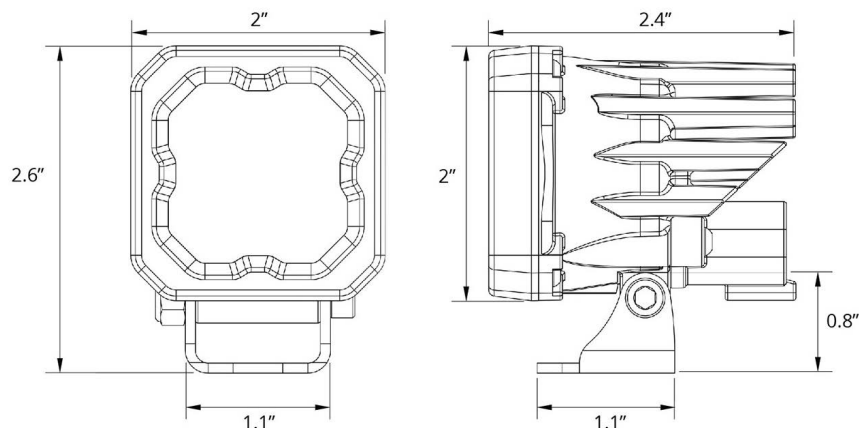
Spectral Distribution

CHROMATICITY



X=0.5615, Y=0.4306

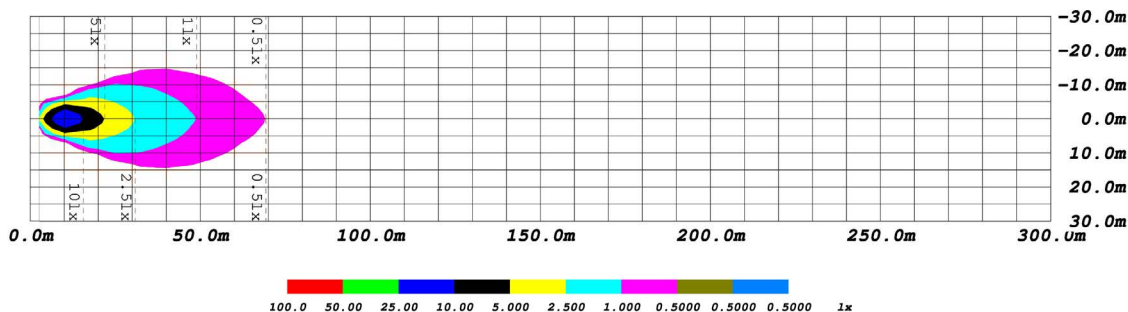
PRODUCT DIMENSIONS



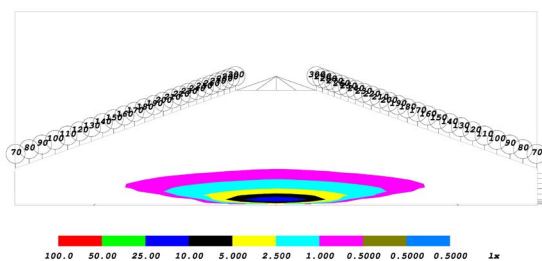
PUBLISHED: 1-10-2022

PHOTOMETRIC SPECIFICATIONS

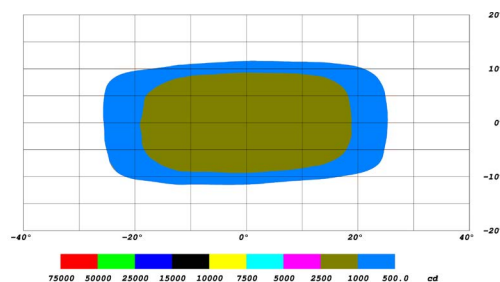
Wide Optic Isolux



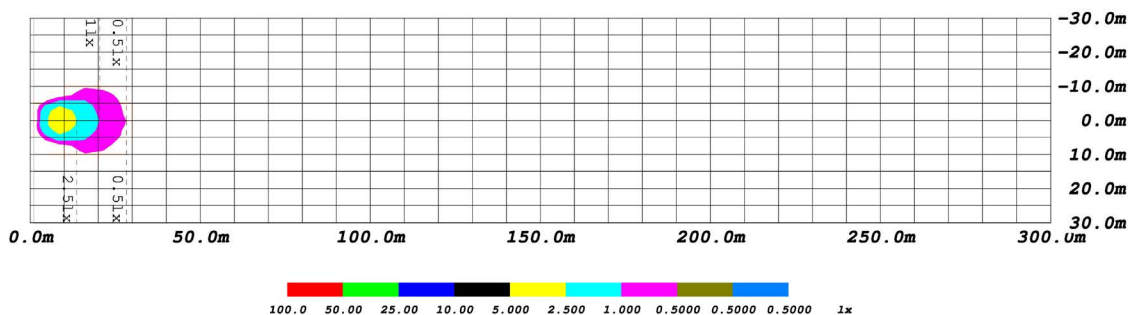
Wide Optic Perspective



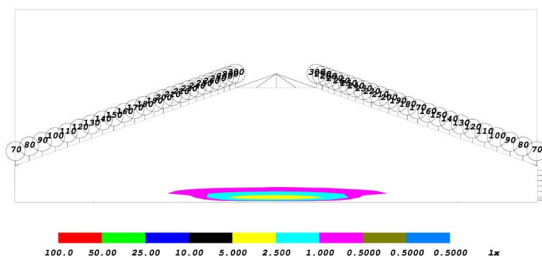
Wide Optic Isocandela



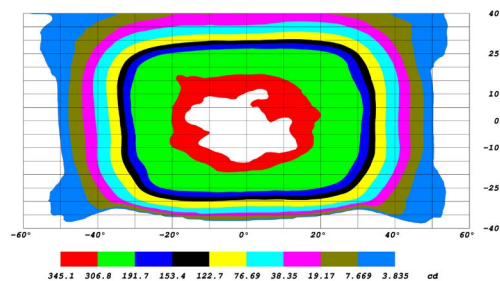
Flood Optic Isolux



Flood Optic Perspective



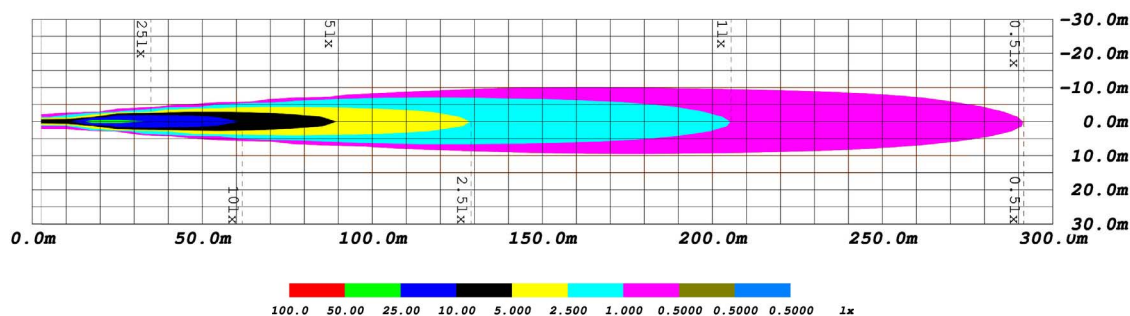
Flood Optic Isocandela



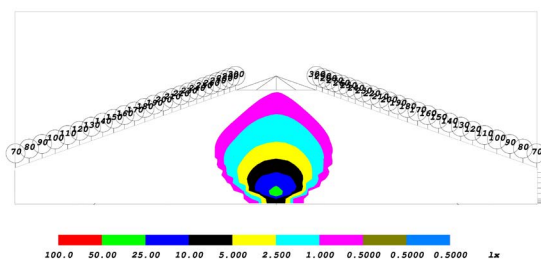
PUBLISHED: 1-10-2022

PHOTOMETRIC SPECIFICATIONS (cont.)

Spot Optic Isolux



Spot Optic Perspective



Spot Optic Isocandela

