

Stage Series 3" Sport White Standard LED Pod

DIODE DYNAMICS

PERFORMANCE LIGHTING TECHNOLOGY



FEATURES

STAGE
SERIES



- Advanced TIR optics provide high efficiency and focus
- High-intensity automotive-type LEDs
- Pin-fin heatsink design, for superior thermal dissipation
- Integrated Deutsch-style connector
- Durable powdercoated aluminum construction
- Designed, torture tested and assembled in USA

GENERAL SPECIFICATIONS

Optic	Peak Beam Intensity (Candela)	Illuminance (lux @10m)	Measured Output (Lumens)	Raw Output (Lumens)	Output Color
Driving	54,700 cd	547 lux	1,520 lm	2,262 lm	6000K White
Flood	1,750 cd	18 lux	1,520 lm	2,262 lm	6000K White
Fog	10,600 cd	106 lux	1,520 lm	2,262 lm	6000K White
Combo	31,500 cd	315 lux	1,520 lm	2,262 lm	6000K White
Spot	151,000 cd	1510 lux	1,520 lm	2,262 lm	6000K White

Functions: White Output

Voltage Range: 9-16V

Current Draw (amps @ 12.8V): 1.1A

Wattage: 14.5W

Connector Type: Deutsch DT Connector

Driver Type: Integrated Driver

LED Type/Count: Luxeon Z ES/4 total

Compliance Rating: J575 Durability Test, SAE-F J583, SAE-Y J581

Intrusion Rating: IP69K Waterproof, High Pressure

Operating Temperature: -40°C to 85°C

What's Included:

- One (1) or Two (2) Stage Series 3" LED Pods
- One (1) or Two (2) Deutsch-style wire pigtails
- One (1) or Two (2) Mounting brackets and hardware

Dimensions & Weight:

Length: 14.5" **Width:** 10" **Height:** 5"

Weight: 2.5 lbs (single), 3.5 lbs (pair)

SKUs: Append "S" to the end of each SKU for single and "P" for pair

DD6120 Stage Series 3" Sport White Driving Standard
DD6121 Stage Series 3" Sport White Flood Standard

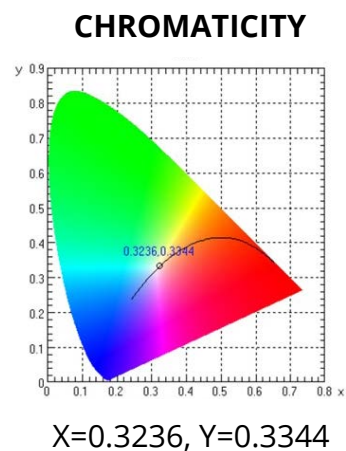
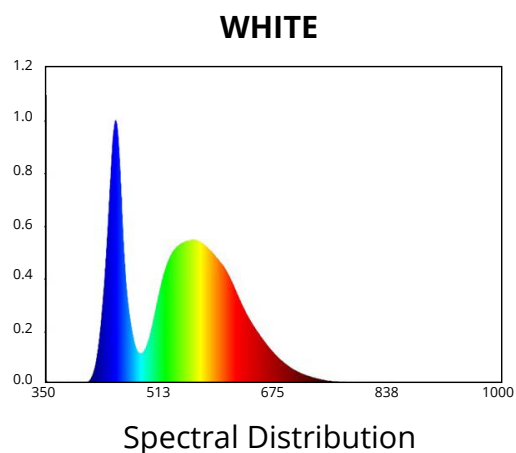
DD6122 Stage Series 3" Sport White Fog Standard
DD6123 Stage Series 3" Sport White Spot Standard

DD6479 Stage Series 3" Sport White Combo Standard

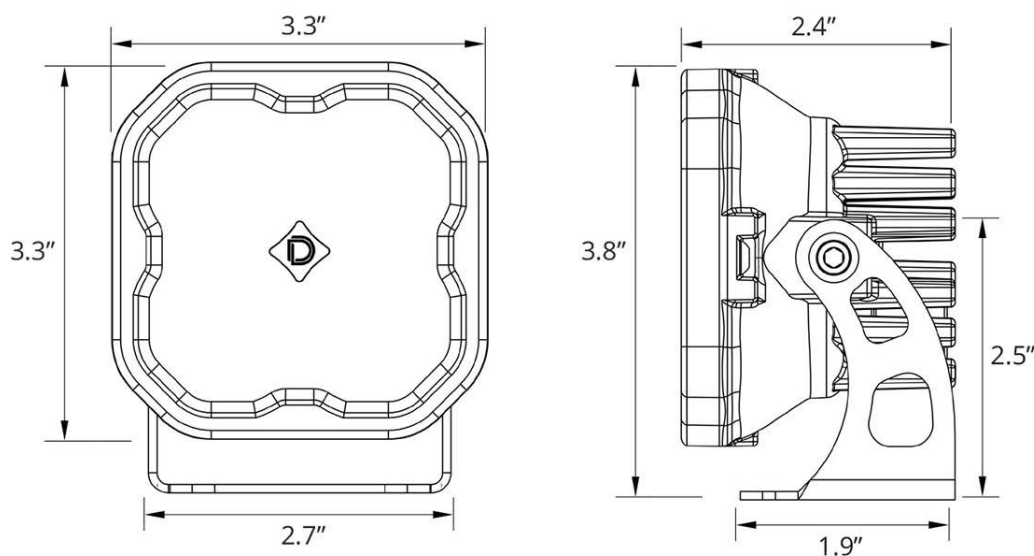
All data and specifications are nominal values and may vary.

PUBLISHED: 2-24-2021

COLORIMETRIC SPECIFICATIONS



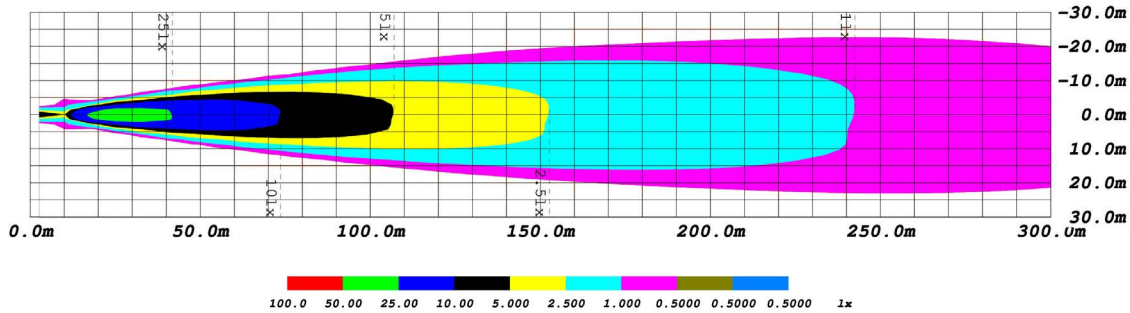
PRODUCT DIMENSIONS



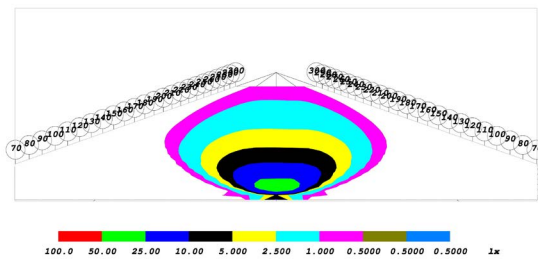
PUBLISHED: 2-24-2021

PHOTOMETRIC SPECIFICATIONS

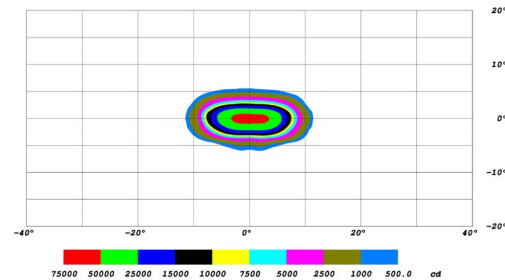
Driving Optic Isolux



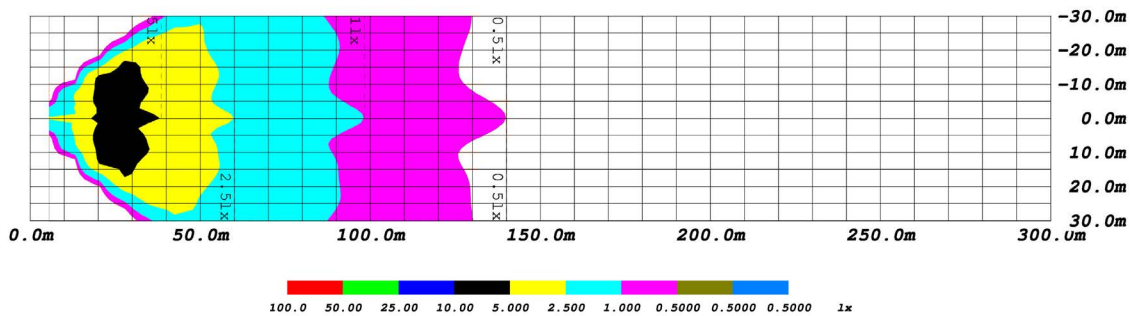
Driving Optic Perspective



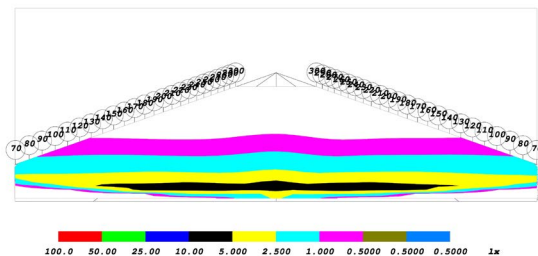
Driving Optic Isocandela



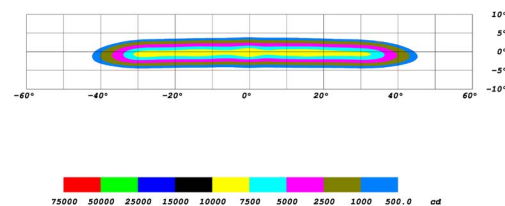
Fog Optic Isolux



Fog Optic Perspective



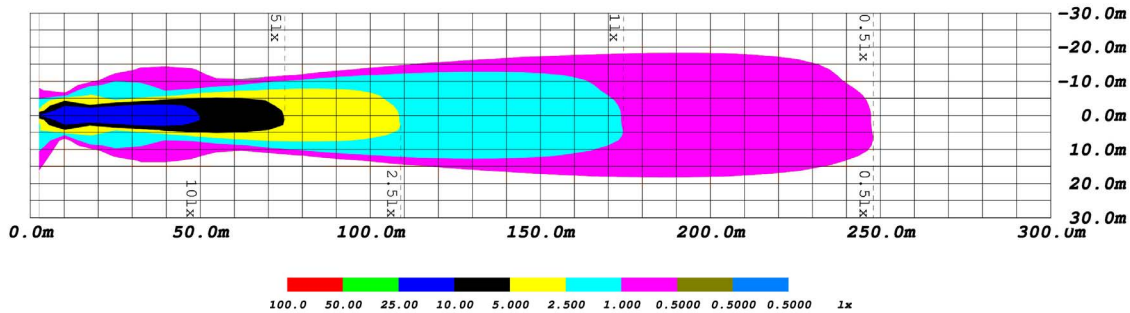
Fog Optic Isocandela



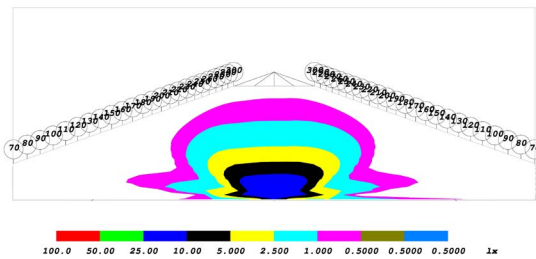
PUBLISHED: 2-24-2021

PHOTOMETRIC SPECIFICATIONS (cont.)

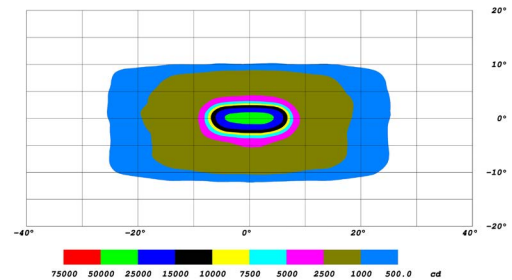
Combo Optic Isolux



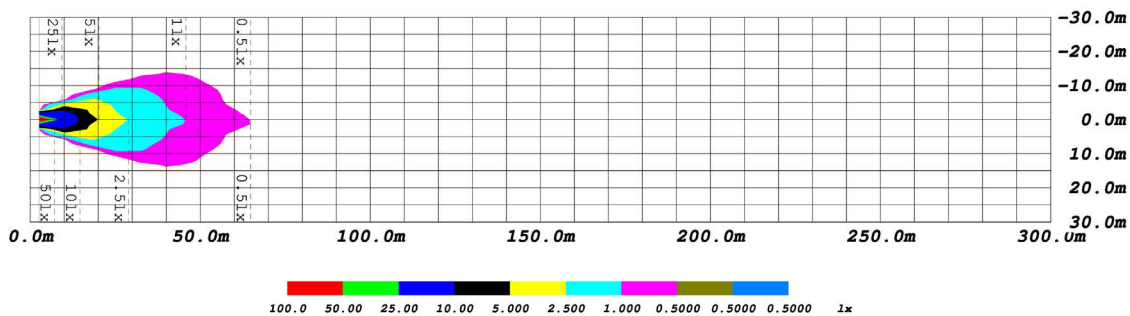
Combo Optic Perspective



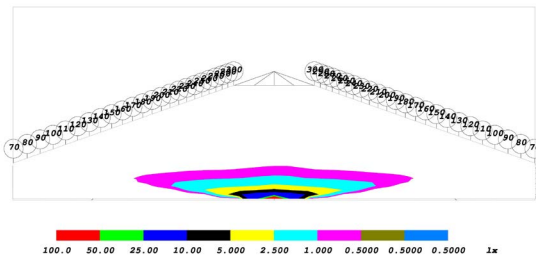
Combo Optic Isocandela



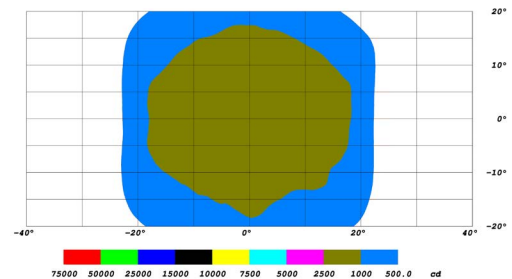
Flood Optic Isolux



Flood Optic Perspective



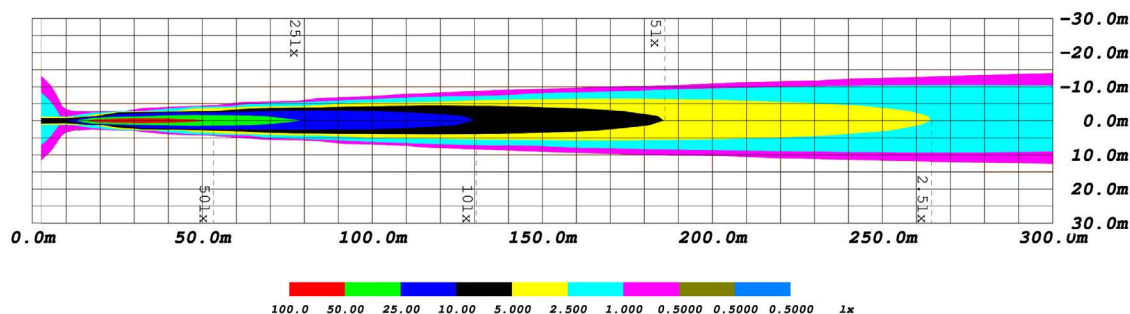
Flood Optic Isocandela



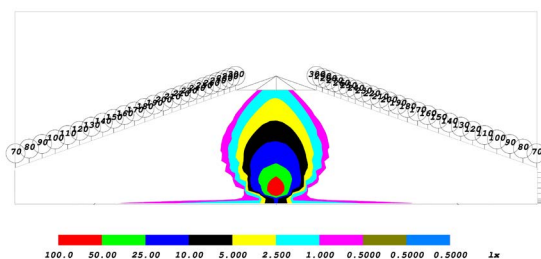
PUBLISHED: 2-24-2021

PHOTOMETRIC SPECIFICATIONS (cont.)

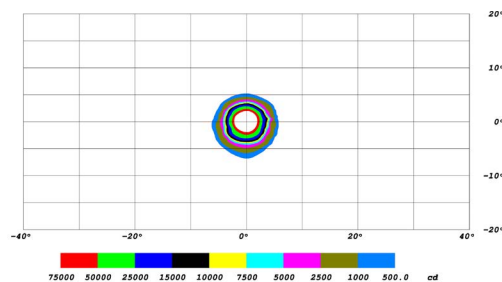
Spot Optic Isolux



Spot Optic Perspective



Spot Optic Isocandela



PUBLISHED: 2-24-2021