

Stage Series 3" Pro White Flush Mount LED Pod

DIODE DYNAMICS
PERFORMANCE LIGHTING TECHNOLOGY



FEATURES

STAGE
SERIES



- Allows for flush installation on bumpers and truck beds
- Advanced TIR optics provide high efficiency and focus
- Pin-fin heatsink design, for superior thermal dissipation
- Integrated Deutsch-style connector
- Durable powdercoated aluminum construction
- Designed, torture tested and assembled in USA

GENERAL SPECIFICATIONS

Optic	Peak Beam Intensity (Candela)	Illuminance (lux @10m)	Measured Output (Lumens)	Raw Output (Lumens)	Output Color
Driving	66,500 cd	665 lux	3,000 lm	5,796 lm	6000K White
Flood	3,100 cd	31 lux	3,000 lm	5,796 lm	6000K White
Fog	11,900 cd	119 lux	3,000 lm	5,796 lm	6000K White
Combo	35,100 cd	351 lux	3,000 lm	5,796 lm	6000K White
Spot	131,500 cd	1,315 lux	3,000 lm	5,796 lm	6000K White

Functions: White Output

Voltage Range: 9-16V

Current Draw (amps @ 12.8V): 2.7A

Wattage: 36W

Connector Type: Deutsch DT Connector

Driver Type: Integrated Driver

LED Type/Count: Cree XP-L HI/4 total

Compliance Rating: J575 Durability Test, SAE-F J583, SAE-Y J581

Intrusion Rating: IP69K Waterproof, High Pressure

Operating Temperature: -40°C to 85°C

What's Included:

- One (1) or Two (2) Stage Series 3" LED Pods
- One (1) or Two (2) Deutsch-style wire pigtails
- One (1) or Two (2) Flush Frame gaskets
- Mounting hardware and drilling template

Dimensions & Weight:

Length: 14.5" **Width:** 10" **Height:** 5"

Weight: 2.5 lbs (single), 3.5 lbs (pair)

SKUs: Append "S" to the end of each SKU for single and "P" for pair

DD6208 Stage Series 3" Pro White Driving Flush
DD6209 Stage Series 3" Pro White Flood Flush

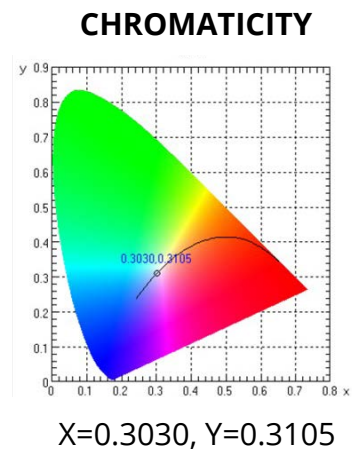
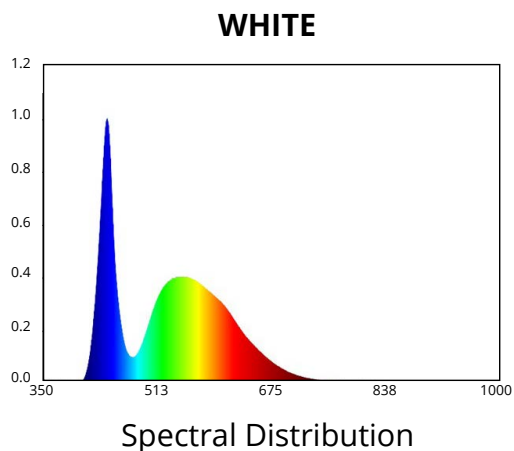
DD6210 Stage Series 3" Pro White Fog Flush
DD6211 Stage Series 3" Pro White Spot Flush

DD6720 Stage Series 3" Pro White Combo Flush

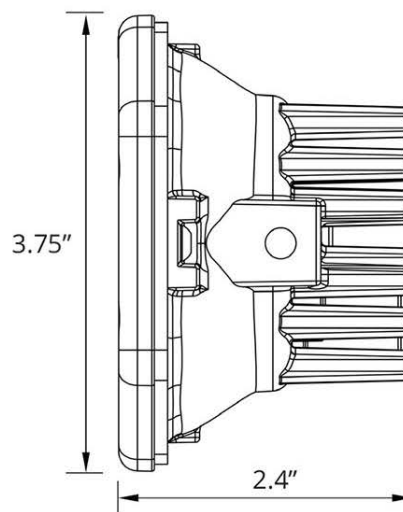
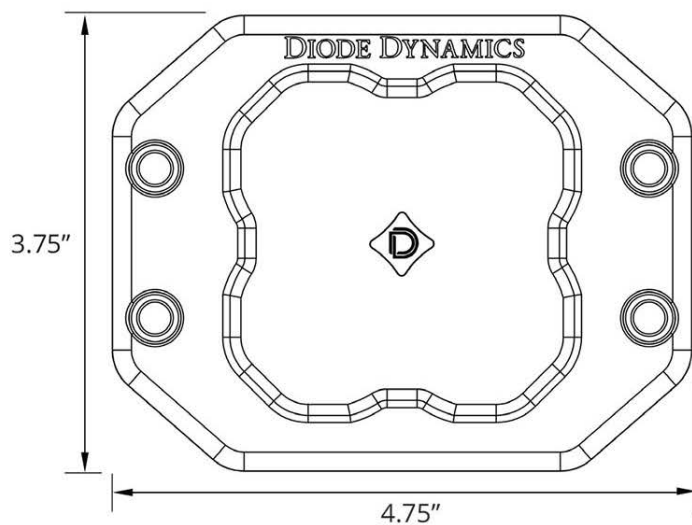
All data and specifications are nominal values and may vary.

PUBLISHED: 2-24-2021

COLORIMETRIC SPECIFICATIONS



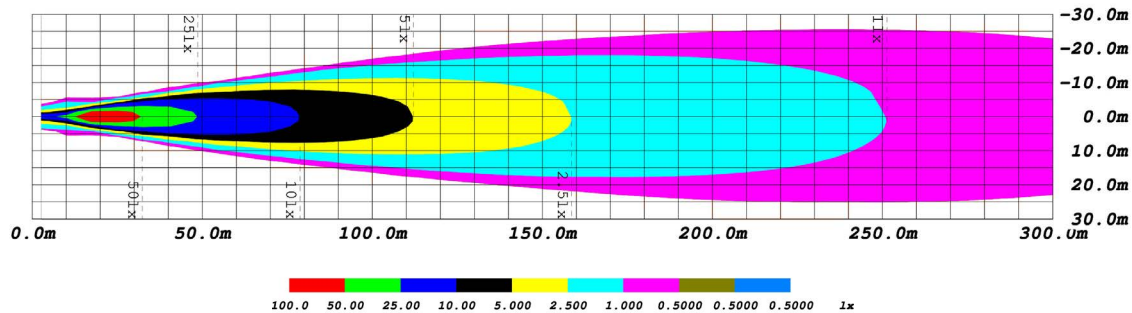
PRODUCT DIMENSIONS



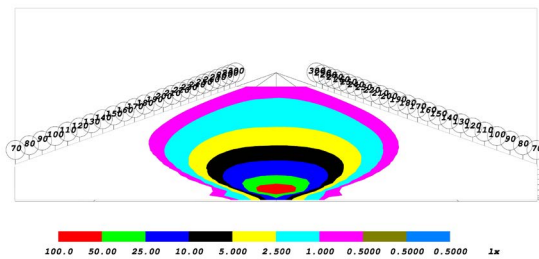
PUBLISHED: 2-24-2021

PHOTOMETRIC SPECIFICATIONS

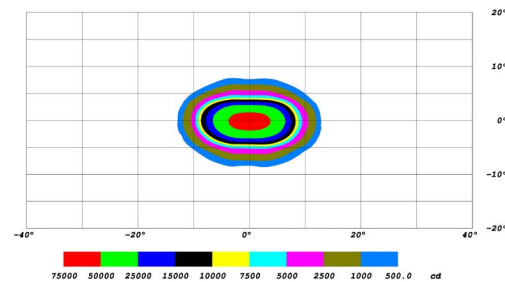
Driving Optic Isolux



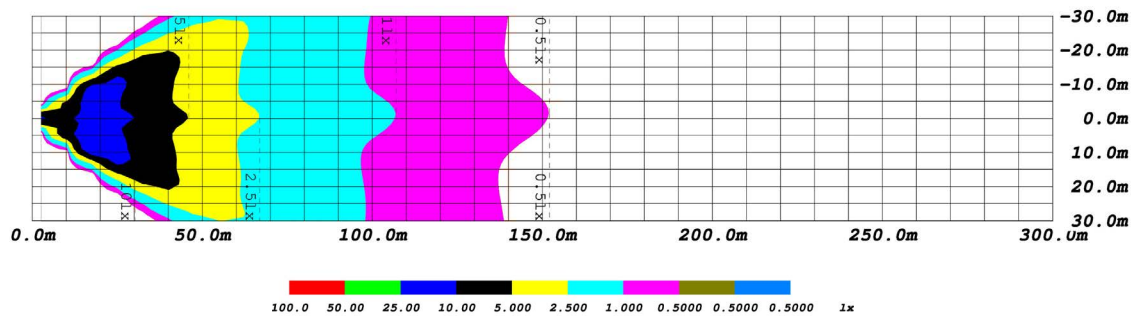
Driving Optic Perspective



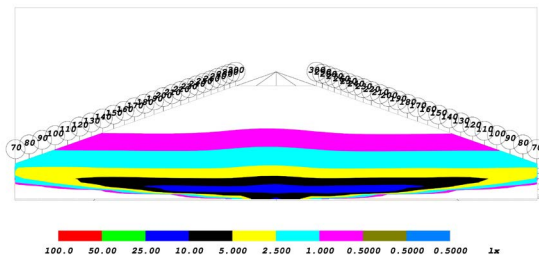
Driving Optic Isocandela



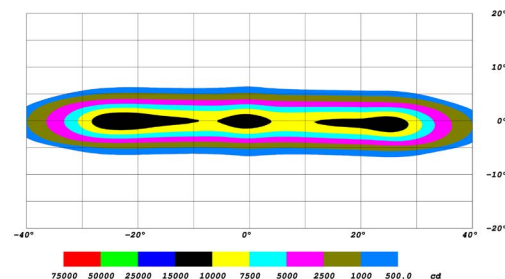
Fog Optic Isolux



Fog Optic Perspective



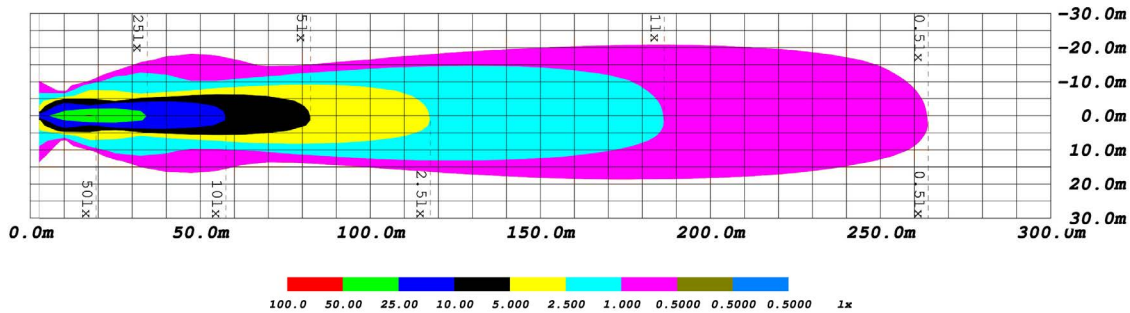
Fog Optic Isocandela



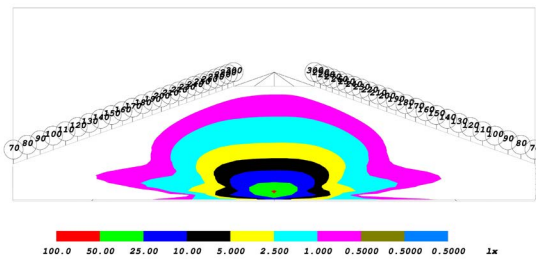
PUBLISHED: 2-24-2021

PHOTOMETRIC SPECIFICATIONS (cont.)

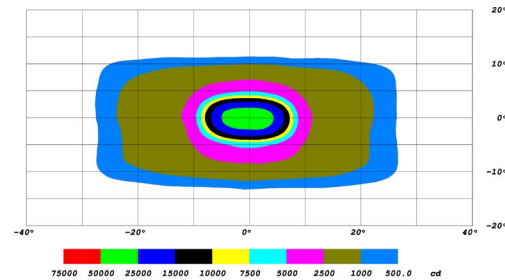
Combo Optic Isolux



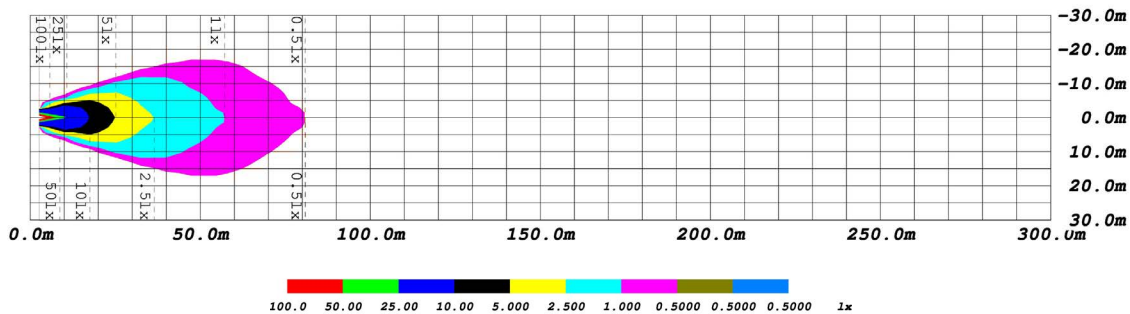
Combo Optic Perspective



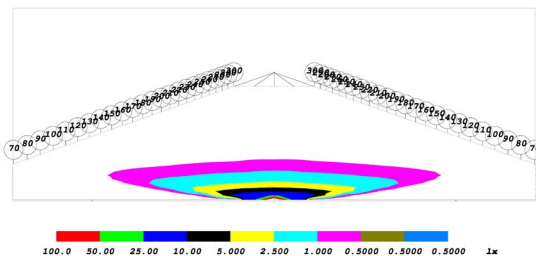
Combo Optic Isocandela



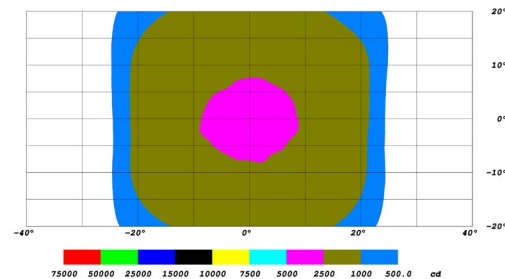
Flood Optic Isolux



Flood Optic Perspective



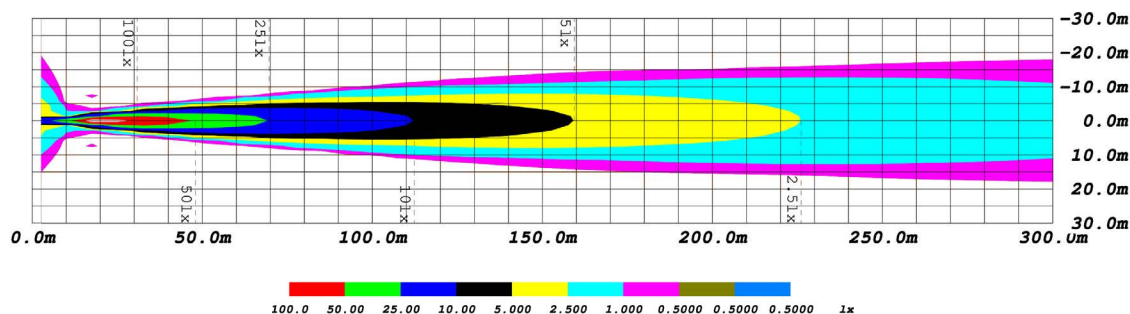
Flood Optic Isocandela



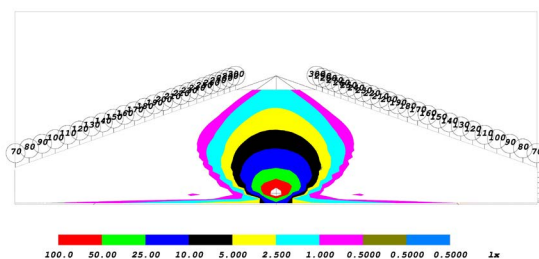
PUBLISHED: 2-24-2021

PHOTOMETRIC SPECIFICATIONS (cont.)

Spot Optic Isolux



Spot Optic Perspective



Spot Optic Isocandela

